

TouchScan® TS60 Vet

Practical, Efficient and Touch System for Veterinary Diagnosis

The TouchScan® TS60 Vet, with its simple user interface and advanced imaging technology incorporated in compact touch hardware design, provides not only the latest in diagnostics function, but also the greatest possible user convenience for small animals and big animals such as equine, bovine. TS60 will provide you with optimal coverage in all fields of various animal veterinary.



ACCURATE



EASY



FAST

All-Touch control panel to offer a new degree of intuitive operation.



ADVANTAGES AT A GLANCE

- Superior image quality
- Compact design to be with you wherever
- Hi-Res 15" LCD capacitive full touch-screen monitor
- Simplified workflow with focused diagnosis
- Multiple transducers to enable extended diagnosis
- Various animal veterinary measurement packages
- Advanced simple user interface performance
- Digital TGC Preset
- Convenient Handle
- Micro Probe Connector
- External keyboard (option)

TouchScan® TS60 Vet



All-Touch control panel to offer a new degree of intuitive operation.

SIMPLE TOUCH TO SAVE TIME

The highest levels of accuracy and efficiency in diagnosis and treatment are possible with TS60 Vet, which features user-friendly touch screen operation and truly intuitive user interface reduces time for learning and operating.

Excellent Performance in a Compact, Portable Design

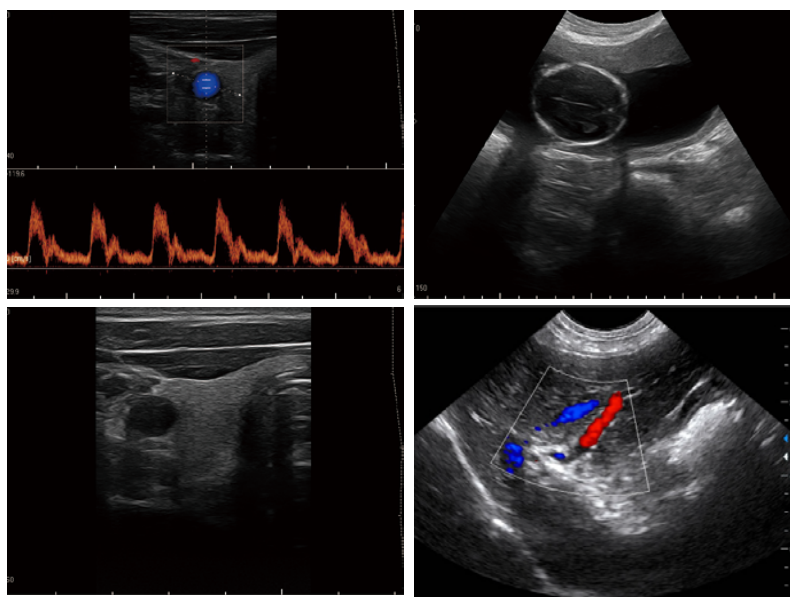
- High quality clinical images: strengthen users' diagnostic confidence thus enabling more accurate diagnoses
- Advanced Imaging Technologies
- Fully Customizable Touch Screen
- Versatile Applications and Easy-to-Use Features

Portable, Flexible and Optimized Workflow

- Mount on a wall, ceiling or height-adjustable cart using universal VESA support or position on any flat, stable surface
- Fully programmable touch screen for easy customization
- Special Animal Measurement Package
- Multiple transducers to enable extended diagnosis:

Premium Features

- Superior image quality
- Compact design to be with you wherever
- Hi-Res 15" LCD capacitive full touch-screen monitor
- Simplified workflow with focused diagnosis
- Multiple transducers to enable extended diagnosis
- Advanced simple user interface performance
- Digital TGC Preset
- Convenient Handle, Micro Probe
- Connector
- Built-in 2+ hour battery
- External keyboard (option)
- Mounting systems: wall mount or ergonomic cart(option)



Convex probe
Frequency range:2~5MHz



Linear probe
Frequency range:5~10MHz



HF Linear probe
Frequency range:8~14MHz



Micro-convex probe
Frequency range:5~8.5MHz



Rectal Linear Probe
Frequency range:5~8MHz

www.bmv.cc



Specification subject to change without prior notice
©2008-2016 BMV Technology Co., Ltd. All Rights Reserved

BMV Technology Co., Ltd

Address: 4/F, BMV of Yinjin Building, Block 71,
Baoan Centre District, Shenzhen, China

Tel: + 86-755-26564580; Email: export@bmvc.com

